

Spec-Thermal[®]

PRE-INSULATED MASONRY SYSTEM



Thermal Performance Masonry Beauty Inside and Out

HI-R-H
HI-R-H HALF HIGH

Meets Stringent Energy
Code requirements

Robust fully grouted
construction for
superior durability, safe-
ty and resilience

Saves Time and Expense
due to Efficiency of
Single Wythe Construc-
tion

Beautiful and Durable
Masonry Finish Inside
and Out

Available in Full and Half
High Versions for Classic
Masonry Beauty



Korfil® HI-R-H Pre-Insulated Masonry Systems

HI-R-H and HI-R-H Half High are pre-insulated fully grouted masonry wall systems that offer superior thermal performance. Throw out your expectation that masonry cannot meet stringent Code requirements; these products are game changers.

Applications

- Double exposed single wythe masonry walls with durable architectural finishes for conditioned spaces in all Climate Zones.
- Single wythe walls for conditioned spaces in all Climate Zones with furring/wallboard and/or interior or exterior insulation.
- Load-bearing walls above and/or below grade.

Thermal Performance

- Two part offset interlocking 3.5" or 4" insulation insert with lapped joints.
- The HI-R H wall systems minimize thermal bridging and use thick, interlocking Korfil® insulation inserts and interior exposed thermal mass to provide excellent energy conservation.
- Superior thermal performance to HI-R products.

Fully Grouted Wall System

- Barrier wall performance resists moisture penetration and condensation issues with use of integral water repellent in block and mortar and post-applied sealant.
- **Four hour** fire rating is typical. Check with manufacturer for details.
- No additional air barrier or vapor retarder is required with fully grouted masonry walls (assumes use of integral water repellent in unit and mortar)
- Great choice for structures designed to be resilient against natural hazards.
- Great choice for demanding applications requiring extensive reinforcement.

Construction Efficiency and Value

- Shape eases placement even with tight reinforcement spacing.
- No modification to stretcher unit required for bond beam construction.
- Utilities (plumbing and electrical) readily fit in unit cores and horizontal voids.
- Single trade installs interior and exterior finishes, structure and insulation in one step.
- Unit Width: 12" (10" in some regions only – please check with your representative).

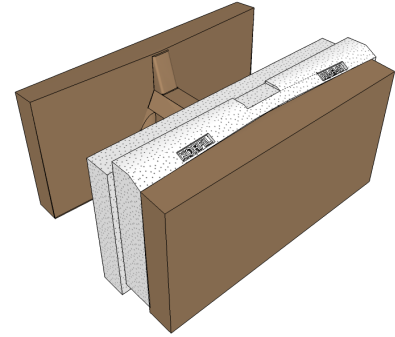


Thermal Properties

HI-R-H is a single web pre-insulated masonry unit suitable for fully grouted walls. Typically, it is the most cost-effective pre-insulated option.

Features:

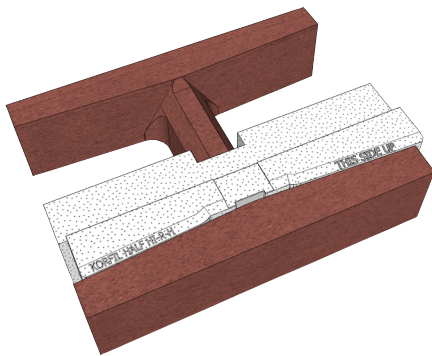
- Unit Dimensions: 12x8x16 nominal (10x8x16 available in some markets)
- Insulation Options: 3.5" or 4" Insulation Inserts are available - 3.5" for greater cost efficiency, 4" (for 12x8x16 only) where needed for greater performance
- Offered with full range of masonry textures and colors
- When made with Spec-Brik Colors the product is called **Spec-Brik Jumbo HI-R-H**



| 12x8x16 HI-R-H (Grouted) | | | | | |
|---------------------------------|---------------|-------|-------|-------|-------|
| 3.5 inch insulation inch insert | Density (pcf) | | | | |
| | 95 | 105 | 115 | 125 | 135 |
| R _t Value | 16.32 | 14.98 | 13.74 | 12.50 | 11.25 |
| U Factor | 0.061 | 0.067 | 0.073 | 0.080 | 0.089 |
| Heat Capacity | 20.10 | 20.80 | 21.50 | 22.10 | 22.80 |
| Equivalent Thickness | 9.60 | 9.60 | 9.60 | 9.60 | 9.60 |

| 12x8x16 HI-R-H (Grouted) | | | | | |
|-------------------------------|---------------|-------|-------|-------|-------|
| 4 inch insulation inch insert | Density (pcf) | | | | |
| | 95 | 105 | 115 | 125 | 135 |
| R _t Value | 17.56 | 16.12 | 14.78 | 13.45 | 12.11 |
| U Factor | 0.057 | 0.062 | 0.068 | 0.074 | 0.083 |
| Heat Capacity | 13.26 | 14.65 | 16.05 | 17.44 | 18.84 |
| Equivalent Thickness | 8.06 | 8.06 | 8.06 | 8.06 | 8.06 |

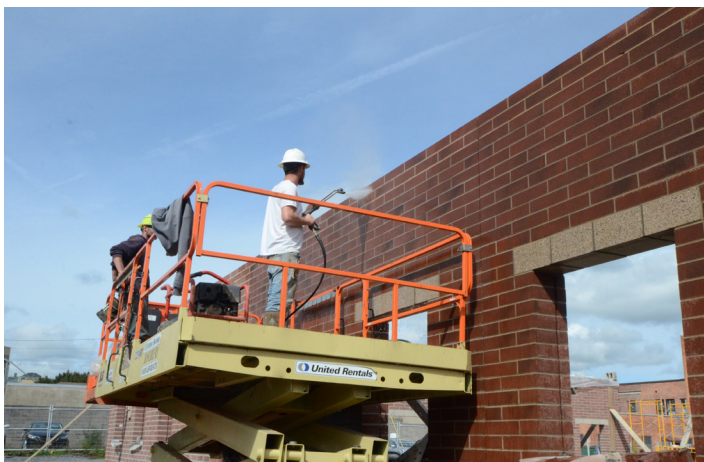
Check with your local manufacturer to confirm the density of concrete block they offer. Since this depends on locally available materials, density offerings will vary by location.



HI-R-H HALF HIGH is a single web pre-insulated masonry unit suitable for fully grouted walls that has a 4" x 16" face dimension.

Features:

- Available unit dimensions: 12"x4"x16" nominal
- Great for pre-insulated walls where brick aesthetics are desired.
- When made with SPEC-BRIK Colors, the product is called **SPEC-BRIK HI-R-H**.



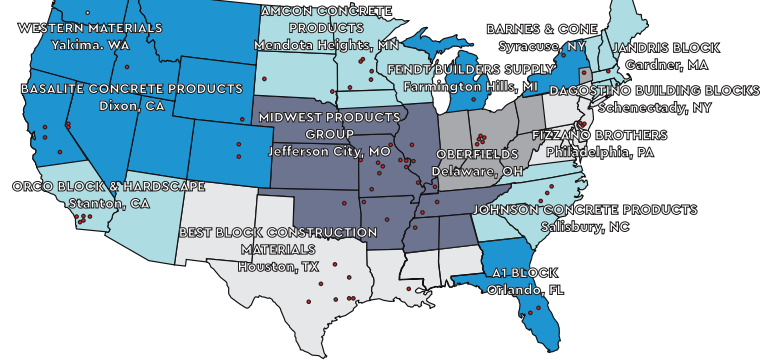
| 12x4x16 HI-R-H HALF HIGH/SPEC-BRIK HI-R-H | | | | | |
|---|---------------|-------|-------|-------|-------|
| 4 Inch Insulation Insert | Density (pcf) | | | | |
| | 95 | 105 | 115 | 125 | 135 |
| R _t Value | 17.87 | 16.40 | 15.04 | 13.69 | 12.32 |
| U Factor | 0.056 | 0.061 | 0.066 | 0.073 | 0.081 |
| Heat Capacity | 11.59 | 12.81 | 14.03 | 15.25 | 16.47 |
| Equivalent Thickness | 7.88 | 7.88 | 7.88 | 7.88 | 7.88 |

Solutions Available Nationwide

The Concrete Products Group (CPG) consists of regional market leaders in the concrete products industry. CPG is organized to provide consistent, top-quality products to regional and national customers. CPG provides industry leading support and service throughout the nation.

We provide a comprehensive set of design resources to support designers, including a library of CAD Details, a Thermal properties guide, design and construction notes and videos and color selection and rendering tools that are available via a Revit® plug-in.

Please contact us if we can assist with your next project.



Manufacturing Locations

www.concreteproductsgroup.com
info@concreteproductsgroup.com
800-789-0872

| | | | | | | |
|--|--|--|---|---|--|---|
| A-1 BLOCK 1617 South Division Avenue Orlando, FL 32805 | AMCON CONCRETE PRODUCTS, LLC 2025 Centre Pointe Blvd., Suite 300 Mendota Heights, MN 55120-1221 | BARNES & CONE P.O. Box 280 5894 Court St. Rd. Syracuse, NY 13206-0280 | BASALITE CONCRETE PRODUCTS LLC 605 Industrial Way Dixon, CA 95620 | BEST BLOCK 7620 Washington Ave. Houston, TX 77007 | DAGOSTINO BUILDING BLOCKS, INC. 1111 Altamont Avenue Schenectady, NY 12303 | FENDT BUILDERS SUPPLY 22005 Gill Rd, Farmington, MI 48335 |
| FIZZANO BROTHERS CONCRETE PRODUCTS, INC. 1776 Chester Pike Crum Lynne, PA 19022-1299 | JANDRIS BLOCK 202 High St. Gardner, MA 01440 | JOHNSON CONCRETE COMPANY 217 Klumac Road Salisbury, NC 28144 | MIDWEST PRODUCTS GROUP 12901 St. Charles Rock Rd. Bridgeton, MO 63044-2485 | OVERFIELDS, LLC P.O. Box 362 528 London Rd. Delaware, OH 43015 | ORCO BLOCK & HARDSCAPE 11100 Beach Blvd. Stanton, CA 90680-0129 | WESTERN MATERIALS COMPANY 1202 South First Street Yakima, WA 98901 |



CONCRETE PRODUCTS GROUP

INNOVATIVE CONCRETE MASONRY SYSTEMS

© 2020 Concrete Products Group, LLC
 All rights reserved. RD 01-08-2019

Hi-R and KORFIL are registered trademarks of CONCRETE BLOCK INSULATING SYSTEMS, INC.