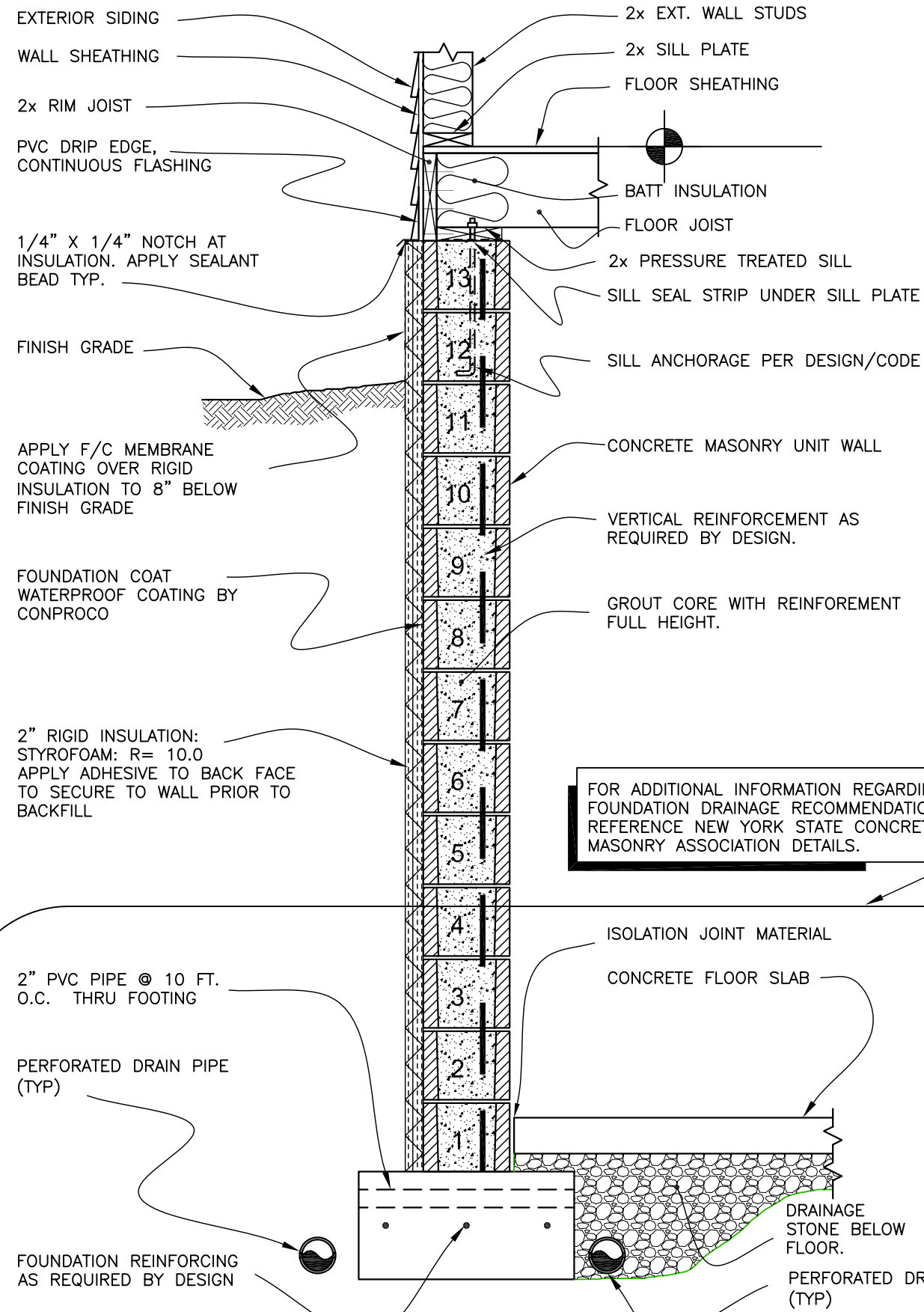
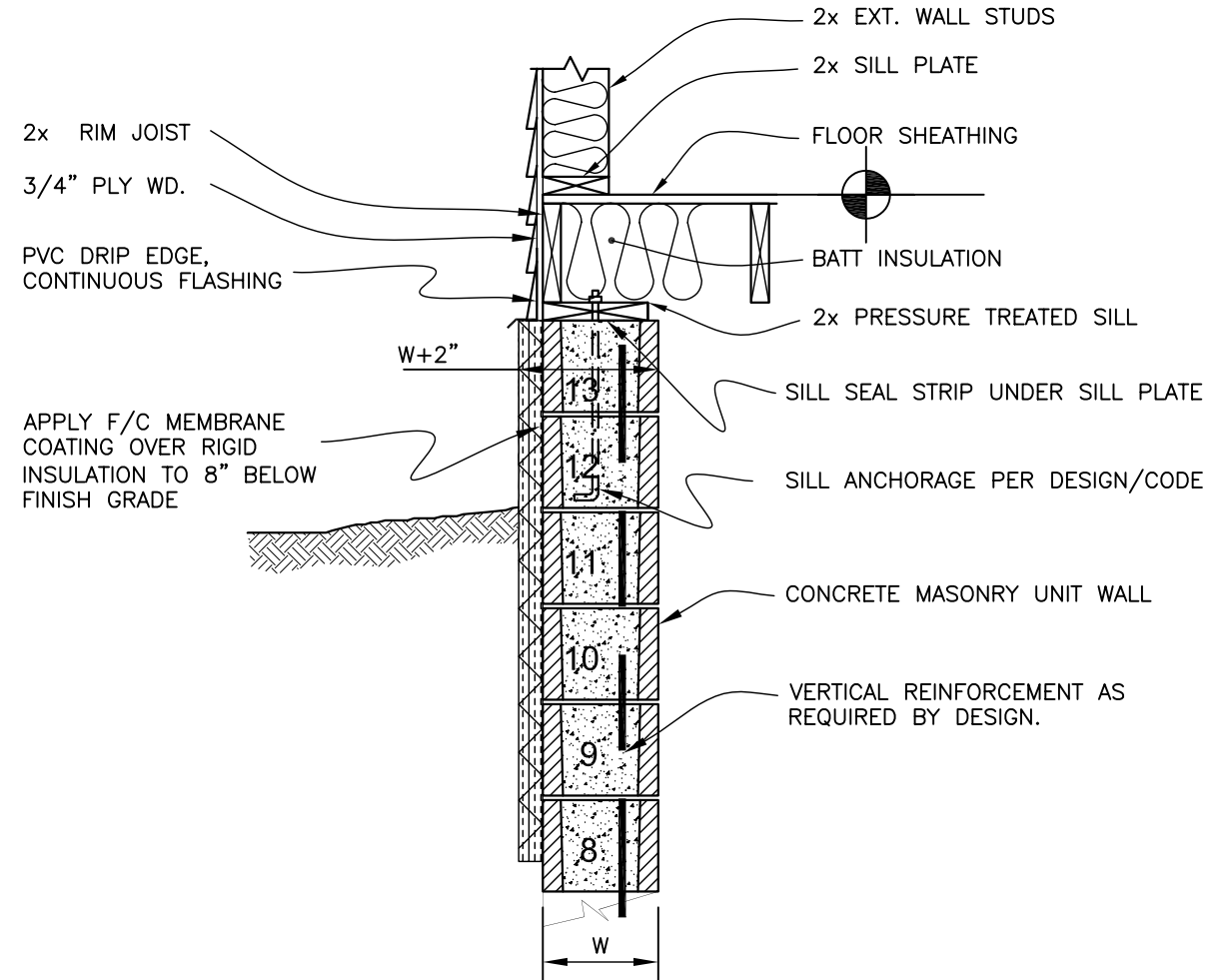


C:\WORK07\BARNES\23108\Drawings\EXT-FDN-INSUL_10in_Wall_11x17-Rev03.dwg Mar 04, 2010 - 6:03pm



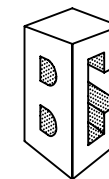
DETAIL "A" - JOIST BEARING

FOR ADDITIONAL INFORMATION REGARDING FOUNDATION DRAINAGE RECOMMENDATIONS REFERENCE NEW YORK STATE CONCRETE MASONRY ASSOCIATION DETAILS.



REFERENCE DETAIL "A" FOR INFORMATION NOT SHOWN ABOVE.

DETAIL "B" - JOIST PARALLEL



Barnes & Cone
ARCHITECTURAL MASONRY
The Foundation of Fine Design

5894 COURT STREET ROAD, SYRACUSE, NEW YORK
(315) 437-0305

THESE PRELIMINARY DETAILS ARE INTENDED AS AN AID IN DESIGNING ENERGY EFFICIENT CONCRETE MASONRY BASEMENT WALLS. FINAL DETERMINATION OF THE SUITABILITY OF ANY INFORMATION OR MATERIAL FOR THE USE CONTEMPLATED AND IT'S MANNER OF USE, IS THE SOLE RESPONSIBILITY OF THE END USER. FINAL PROJECT DESIGNS, DETAILS AND SPECIFICATION SHOULD BE PREPARED BY A QUALIFIED, LICENSED DESIGN PROFESSIONAL.

REV. NO.	DATE	TITLE: EXTERIOR INSULATION ALTERNATE
		DRAWN BY: DRT DATE: 03/4/10
		D DiBartolomeo Engineering, P.C. Structural Consultants 717 E. Genesee Street Syracuse, NY 13210